

ThingsHiFi GH

SOLAR GRID HYBRID INVERTER

1,3 & 5 KVA GRID HYBRID INVERTER

BMS WITH UPS FUNCTIONALITY

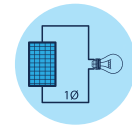
HF TRANSFORMERLESS DESIGN

5+ YEAR WARRANTY EXTENTION

PRODUCT & SYSTEM CERTIFICATE



Fast Auto Disconnection For Faults & Grid Outage



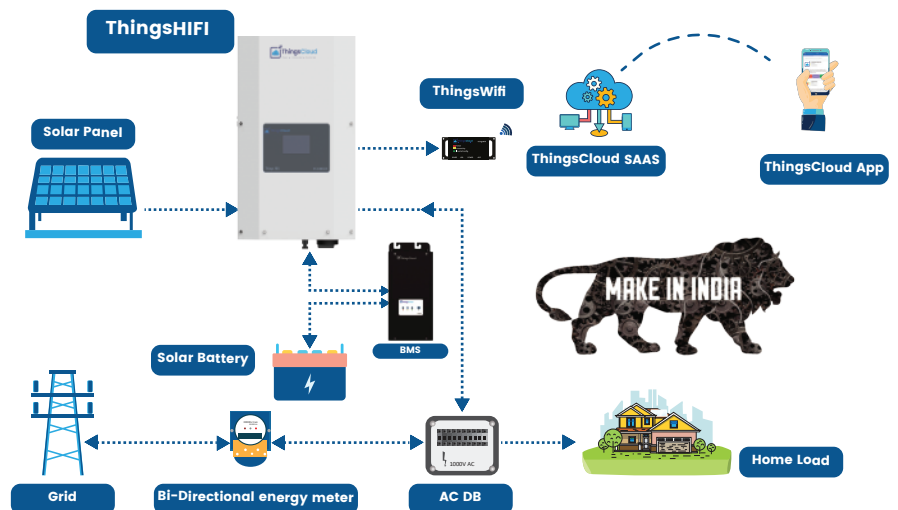
Single Phase - 1, 3, & 5 KVA Grid Hybrid Inverter With Battery.



AI For Predictive & Preventive Maintenance. Learn And Adapt To Customer Usage.



Monitor & Control Via ThingsCloud App & Web Access.



Parameters	ThingsHiFi 1024GH	ThingsHiFi 3048GH	ThingsHiFi 5048GH
------------	-------------------	-------------------	-------------------

SOLAR

Charge Controller rating	1000W	3000 W	5000 W
Max I/P voltage (Voc)	200 V	450 V	450 V
MPP Voltage range	50-160 V	160-360 V	160-360 V
Max I/P Current	10 A	10 A	10 A
Start Up Voltage	40 V	150 V	150 V
No of MPPT	1	1	2

OUTPUT

Nominal O/P Power	1000 W	3000 W	5000 W
Nominal O/P Voltage	230V,50Hz	230V,50Hz	230V,50Hz
Max Grid feed Current	5 A	16 A	25 A
Grid feed Voltage range	165-280 VAC	165-280 VAC	165-280 VAC
Grid feed Frequency range	45-55 Hz	45-55 Hz	45-55 Hz
No. of Phases	1	1	1
Harmonic Distortion	<3%	<3%	<3%
Surge Handling Capacity	150%	150%	150%
UPS Mode	Regulated/Unregulated		

BATTERY

Nominal Battery Voltage	24 V	48 V	48 V
Type of Battery	Sealed / Flooded / Li-ion / Gel		
Charging Current	Low (15A)/High (20A)		
Charging Modes	Boost, Absorbion & Float		

EFFICIENCY

Peak Efficiency	>94 %
Stand by Power consumption	<15 W

DISPLAY & COMMUNICATION

Display	128X64 Graphic LCD
Display Parameters	PV- Voltage & Current, Grid Voltage, Grid feed current, Energy generated, Energy feed to Grid, Battery Voltage, Battery Charging Current, Error Code.
Communication	RS-485
Communication Interface(Optional)	WiFi 802.11 b/g/n

OPERATIONAL PARAMETERS

Operating Temp Range	up to +60 Deg Cel
----------------------	-------------------

MECHANICAL PARAMETERS

Dimensions	(570X3450X200 mm)	INVERTER(634X350X164 mm)	BMS(458X203X150 mm)
Weight	21Kgs	25Kgs	28Kgs
Ingress Protection	IP65		
Recommended Mounting	Wall Mounting		

CERTIFICATIONS

Certifications	IEC 61683, IEC 60068-2(1,2,14,30),IS16169/IEC 62116, IEC 61727 IS16221- 1,2/IEC 62109-1,2, IEC 61000
----------------	---



ThingsCloud Technologies Pvt. Ltd.

No.5 AC - 720, 5th A Cross Kalyan Nagar, HRBR 1st Block,
Bengaluru - 560043, Karnataka. Ph: 080 - 43707856.



ThingsHifi GT

SOLAR GRID TIED INVERTER

1, 3, & 5 KVA
GRID TIED INVERTER

BUILT IN
ZERO EXPORT(Optional)

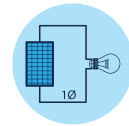
HF TRANSFORMERLESS
DESIGN

5+ YEAR WARRANTY
EXTENTION

PRODUCT & SYSTEM
CERTIFICATE



Fast Auto Disconnection For
Faults & Grid Outage



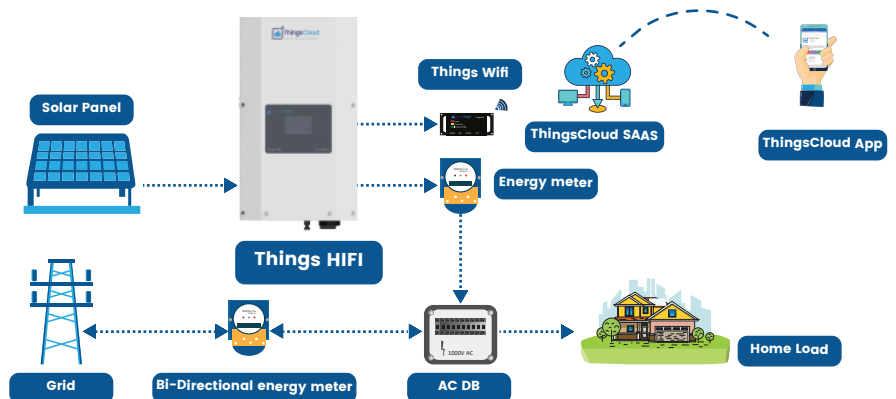
Single Phase - 1, 3, & 5 KVA
Grid Tied Inverter.



AI For Predictive & Preventive
Maintenance. Learn And Adapt
To Customer Usage.



Monitor & Control Via
ThingsCloud App & Web Access.



Parameters	ThingsHiFi 1000GT	ThingsHiFi 3000GT	ThingsHiFi 5000GT
------------	-------------------	-------------------	-------------------

SOLAR

Charge Controller rating	1000 W	3000 W	5000 W
Max I/P voltage (Voc)	200 V	450 V	450 V
MPP Voltage range	50-160 V	160-360 V	160-360 V
Max I/P Current	10 A	10 A	20 A
Start Up Voltage	40 V	150 V	150 V
No of MPPT	1	1	2

OUTPUT

Nominal O/P Power	1000 W	3000 W	5000 W
Nominal O/P Voltage	230V,50Hz	230V,50Hz	230V,50Hz
Max Grid feed Current	5.5 A	15 A	25 A
Grid feed Voltage range	165-280 VAC	165-280 VAC	165-280 VAC
Grid feed Frequency range	45-55 Hz	45-55 Hz	45-55 Hz
Reactive Power	0.8 Resistive	0.8 Resistive	0.8 Resistive
Harmonic Distortion	<3%	<3%	<3%
No. of Phases	1	1	1

EFFICIENCY

Peak Efficiency	>94 %	>94 %	>94 %
Stand by Power consumption	<5 W	<5 W	<5 W

DISPLAY & COMMUNICATION

Display	128X64 Graphic LCD
Display Parameters	PV- Voltage & Current, Grid Voltage, Grid feed current, Energy generated, Energy feed to grid,Error Codes,Frequency.
Communication	RS-485
Communication Interface(Optional)	WiFi 802.11 b/g/n

OPERATIONAL PARAMETERS

Operating Temp Range	up to +60 Deg Cel
----------------------	-------------------

MECHANICAL PARAMETERS

Dimensions	570X345X200 mm	634X350X164 mm	
Weight	15Kgs	19Kgs	22Kgs
Ingress Protection	IP65		
Recommended Mounting	Wall Mounting		

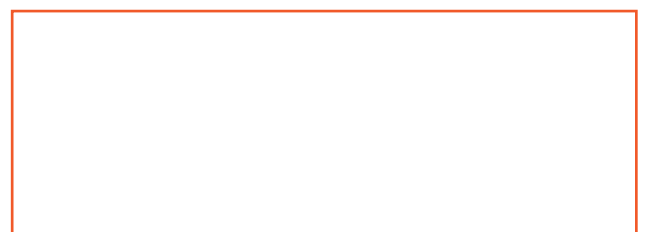
CERTIFICATIONS

Certifications	IEC 61683, IEC 60068-2(1,2,14,30),IEC 62116, IEC/EN 62109-1: 2010, IEC/EN 62109-2: 2011, IEC 61000,IS 16169,IS 16221- 1,2, IEC 61727
----------------	--



ThingsCloud Technologies Pvt. Ltd.

No.5 AC - 720, 5th A Cross Kalyan Nagar, HRBR 1st Block,
Bengaluru - 560043, Karnataka. Ph: 080 - 43707856.



ThingsWifi IOT

WIFI ENABLED IOT DEVICE WITH THINGS CLOUD APP

FORECAST 7 DAYS OF ENERGY GENERATION

SD CARD PROVISION

SUPPORT IOS, ANDROID & WEB

MULTI DEVICES & USER ACCESS

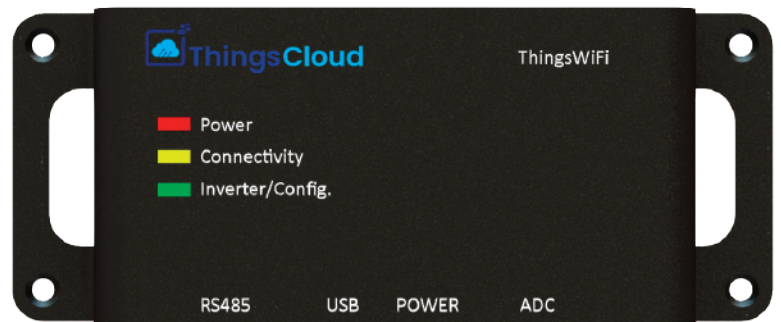
E - MAIL, SMS & APP NOTIFICATIONS

REAL TIME TRACKING

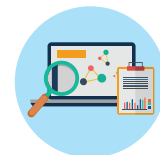
EXTERNAL SENSOR COMPATIBILITY

APPLICATIONS

- Solar Systems
- Wind Farms
- Solar Pumps
- Energy management
- Milk Chillers
- Manufacturing Equipment



AI For Predictive And Preventive Maintenance. Learn And Adapt To Customer Usage.



Solar Data - Analytics : - Real Time Tracking Of Your Device. Built in Modbus RTU To Connect to Any Hardware Devices.



ThingsCloud SAAS - Services & Security.



Wifi b/ g/ n/ Access with RS - 485 Interface



THINGS WIFI SPECIFICATIONS

ELECTRICAL DATA

Power Requirements	5 V, 0.8 A
Max Power Consumption	4W
Power Supply	External adapter

USER INTERFACE

Wifi (2.4ghz, 802.11 B/g/n, WEP,WPA,WPA2,PSK)	YES
RS485	YES
Analog Input	YES (Optional)
LED	4 nos

COMMUNICATION RANGE

RS485	1000m
-------	-------

MECHANICAL DATA

Dimensions (W X H X D)	155 x 30 x 50 mm
Weight	250g
Installation	Wall, indoor

ENVIRONMENTAL CONDITIONS

Operation	Upto 55 Deg cel
Relative Humidity (Non-condensing)	95%
Protection Class	IP20

GENERAL DATA

Cloud Support	Yes
Language Support	EN

FEATURES

Number Of Connected Inverters	Max. 28
Storage	SD Card

